

Little Halden Farm

Luxury Camping Accommodation

www.littlehaldenfarm.co.uk

t: 01580 243435

e: support@littlehaldenfarm.co.uk

Little Halden Farm

Luxury Glamping in the 'Garden of England' - Kent



Ever considered Glamping or Camping in the weald of Kent?

Welcome to Little Halden Farms luxury Glamping, come and stay in a Safari Tent, Yurt, Bell Tent and our newly refurbished Hopper Huts in Kent the Garden Of England. We also offer a summer camping site set in the heart of the beautiful surrounding countryside in the South East of England close to the Kent/Sussex border. Little Halden Farm is really proud to present its luxury Glamping and Camping site. Here at the farm we have some fantastic luxury accommodation to make your Glamping or Camping holiday extra special.

Why choose Little Halden Farm for your Glamping or Camping holiday in Kent?

At Little Halden Farm we can offer you the chance to stay in an area of outstanding beauty. Our Glamping site currently houses a fantastic 20ft yurt, an amazing Safari Tent, a 5m Bell Tent and our four Hopper Huts. In addition to this we also have a new area for summer camping running for 28 days from August.

The Glamping site is set well back from the lane entrance and provides stunning views towards Tenterden. The site offers peaceful surroundings set between an exclusive woodland.

Our summer campsite is also set well back from the main road in a valley between woodland, a thirty minute walk will get you to Rolvenden with its well stocked shop and pubs or you can take a short drive to the historic town of Tenterden.



Our Accommodation - 20 FT Yurt

Book our 20ft Yurt for an unforgettable stay in a beautiful setting. In the Yurt you will find all the comforts of home with the additional magic of be able to see the stars as you drift off to sleep. The Yurt is set on a raised deck so that even in wet weather you can enjoy the views as soon as the skies clear with outside seating and tables. Also on the same deck is a 10ft Yurt which can be used as an extra bedroom, ideal for teenagers wanting their own space.

Key Points

- > Sleeps six comfortably
- > Wood stove
- > Toilets, hot showers and hot water for washing up at sinks are available on site
- > Cook on a camp fire or camping gas cooker (all gas for the cooker is provided)
- > Pizza Stone available for use on the campfire so you can make your own pizzas!
- > Double bed with linen, duvet etc.
- > Cool box provided size 30li (Freezer packs are provided which we will replenish daily)
- > Option of fold away campaign beds (You will need to bring sleeping bags for these, pillows are provided, please ask for more details)
- > Sofa beds (You will need to bring sleeping bags for this, pillows and sheets are provided,)
- > Solar powered lighting
- > 12 volt socket for charging phone etc. (Same sort of socket you would find in your car)

Prices

Seven night stay – Monday pm to Monday am or Friday pm to Friday am £600

Weekend – Friday pm to Sunday pm £300

Long weekend – Friday pm to Monday am £350

Mid-week – four night break Monday pm to Friday am £320

Mid-week – two night break Monday pm to Wednesday am or Wednesday pm to Friday am £200

Mid-week – three night break Monday pm to Thursday am or Tuesday pm to Friday am £300

One night £150 (Single nights are only available on the day and are not bookable in advance)

£50 deposit required at time of booking with the balance payable 1 month before your stay.



Our Accommodation - 14 FT Yurt

New for this year is our 14 ft Yurt, this has all the great features of our 20 ft which includes a wood stove, gas hob double bed and of course your very own fire pit where you can BBQ or just sit round and enjoy the view. We think you'll be surprised how cosy and comfortable it is!

Key Points

- > Sleeps four comfortably
- > Wood stove
- > Toilets, hot showers and hot water for washing up at sinks are available on site
- > Cook on a camp fire or camping gas cooker (all gas for the cooker is provided)
- > Pizza Stone available for use on the campfire so you can make your own pizzas!
- > Double bed with linen, duvet etc.
- > Cool box provided size 30li (Freezer packs are provided which we will replenish daily)
- > Option of fold away campaign beds (You will need to bring sleeping bags for these, pillows are provided, please ask for more details)
- > Sofa beds (You will need to bring sleeping bags for this, pillows and sheets are provided,)
- > Solar powered lighting
- > 12 volt socket for charging phone etc. (Same sort of socket you would find in your car)

Prices

Seven night stay – Monday pm to Monday am or Friday pm to Friday am £600

Weekend – Friday pm to Sunday pm £300

Long weekend – Friday pm to Monday am £350

Mid-week – four night break Monday pm to Friday am £320

Mid-week – two night break Monday pm to Wednesday am or Wednesday pm to Friday am £200

Mid-week – three night break Monday pm to Thursday am or Tuesday pm to Friday am £300

One night £150 (Single nights are only available on the day and are not bookable in advance)

£50 deposit required at time of booking with the balance payable 1 month before your stay.



Our Accommodation - Safari Tent

Our 11m x 6m Safari Tent provides a great under canvas experience with plenty of space, wooden floor and a good level of comfort so as to make your stay a special time. The tent is set on a raised deck that combines well with the tents porch feature. The front of the tent opens right out creating an amazing space to make your stay even more special. Outside seating and tables are available.

Key Points

- > Sleeps six comfortably
- > Wood stove
- > Toilets, hot showers and hot water for washing up at sinks are available on site
- > Cook on a camp fire or camping gas cooker (all gas for the cooker is provided)
- > Pizza Stone available for use on the campfire so you can make your own pizzas!
- > Double bed with linen, duvet
- > Cool box provided size 30li (Freezer packs are provided which we will replenish daily)
- > Option of fold away campaign beds (You will need to bring sleeping bags for these, pillows are provided, please ask for more details)
- > Sofa bed (You will need to bring sleeping bags or duvets for this, pillows and sheets are provided)
- > Bunk beds (You will need to bring sleeping bags or duvets for these, pillows and sheets are provided)
- > Solar powered lighting
- > 12 volt socket for charging phone etc. (Same sort of socket you would find in your car)

Prices

Seven night stay – Monday pm to Monday am or Friday pm to Friday am £600

Weekend – Friday pm to Sunday pm £300

Long weekend – Friday pm to Monday am £350

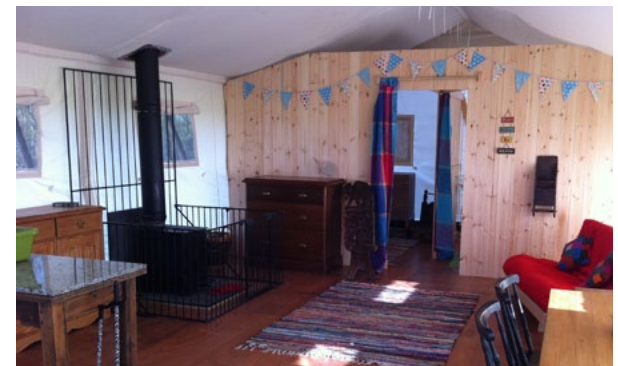
Mid-week – four night break Monday pm to Friday am £320

Mid-week – two night break Monday pm to Wednesday am or Wednesday pm to Friday am £200

Mid-week – three night break Monday pm to Thursday am or Tuesday pm to Friday am £300

One night £150 (Single nights are only available on the day and are not bookable in advance)

£50 deposit required at time of booking with the balance payable 1 month before your stay.



Our Accommodation - Hopper Hut Fuggle

New for this year our Hopper Hut accommodation, these have all the luxuries of our other structures like a double bed, wood stove, 3 ring gas stove and all the other things to make coming away an easy experience so you only need to bring what you want to wear and eat. The Hopper Huts are the ideal accommodation if your looking to come away with friends or just want to get away for a peaceful weekend. With the new insulated roof and wood stoves you will be warm and toasty in the winter and cool through the summer.

You will of course be able to have a camp fire and enjoy the amazing view towards Tenterden.

Key Points

- > Sleeps four comfortably
- > Wood stove
- > Cook on a camp fire or gas hob in the Hut (all gas for the cooker is provided)
- > Pizza Stone available for use on the campfire so you can make your own pizzas!
- > Double bed with linen, duvet etc.
- > Cool box provided size 30li (Freezer packs are provided which we will replenish daily)
- > Futon (You will need to bring sleeping bags or duvets for this, pillows and sheets are provided)
- > Solar powered lighting
- > New insulated roof, warm in winter and cool in the summer
- > 12 volt socket for charging phone etc. (Same sort of socket you would find in your car)
- > Toilets, hot showers and hot water for washing up at sinks are available on site

Prices

Seven night stay – Monday pm to Monday am or Friday pm to Friday am £500

Weekend – Friday pm to Sunday pm £235

Long weekend – Friday pm to Monday am £265

Mid-week – four night break Monday pm to Friday am £285

Mid-week – two night break Monday pm to Wednesday am or Wednesday pm to Friday am £200

Mid-week – three night break Monday pm to Thursday am or Tuesday pm to Friday am £265

One night £150 (Single nights are only available on the day and are not bookable in advance)

£50 deposit required at time of booking with the balance payable 1 month before your stay.



Our Accommodation - Hopper Hut Challenger

New for this year our Hopper Hut accommodation, these have all the luxuries of our other structures like a double bed, wood stove, 3 ring gas stove and all the other things to make coming away an easy experience so you only need to bring what you want to wear and eat. The Hopper Huts are the ideal accommodation if your looking to come away with friends or just want to get away for a peaceful weekend. With the new insulated roof and wood stoves you will be warm and toasty in the winter and cool through the summer.

You will of course be able to have a camp fire and enjoy the amazing view towards Tenterden.

Key Points

- > Sleeps four comfortably
- > Wood stove
- > Cook on a camp fire or gas hob in the Hut (all gas for the cooker is provided)
- > Pizza Stone available for use on the campfire so you can make your own pizzas!
- > Double bed with linen, duvet etc.
- > Cool box provided size 30li (Freezer packs are provided which we will replenish daily)
- > Futon (You will need to bring sleeping bags or duvets for this, pillows and sheets are provided)
- > Solar powered lighting
- > New insulated roof, warm in winter and cool in the summer
- > 12 volt socket for charging phone etc. (Same sort of socket you would find in your car)
- > Toilets, hot showers and hot water for washing up at sinks are available on site

Prices

Seven night stay – Monday pm to Monday am or Friday pm to Friday am £500

Weekend – Friday pm to Sunday pm £235

Long weekend – Friday pm to Monday am £265

Mid-week – four night break Monday pm to Friday am £285

Mid-week – two night break Monday pm to Wednesday am or Wednesday pm to Friday am £200

Mid-week – three night break Monday pm to Thursday am or Tuesday pm to Friday am £265

One night £150 (Single nights are only available on the day and are not bookable in advance)

£50 deposit required at time of booking with the balance payable 1 month before your stay.



Our Accommodation - Hopper Hut Early Bird

New for this year our Hopper Hut accommodation, these have all the luxuries of our other structures like a double bed, wood stove, 3 ring gas stove and all the other things to make coming away an easy experience so you only need to bring what you want to wear and eat. The Hopper Huts are the ideal accommodation if your looking to come away with friends or just want to get away for a peaceful weekend. With the new insulated roof and wood stoves you will be warm and toasty in the winter and cool through the summer.

You will of course be able to have a camp fire and enjoy the amazing view towards Tenterden.

Key Points

- > Sleeps four comfortably
- > Wood stove
- > Cook on a camp fire or gas hob in the Hut (all gas for the cooker is provided)
- > Pizza Stone available for use on the campfire so you can make your own pizzas!
- > Double bed with linen, duvet etc.
- > Cool box provided size 30li (Freezer packs are provided which we will replenish daily)
- > Sofa Bed (You will need to bring sleeping bags or duvets for this, pillows and sheets are provided)
- > Solar powered lighting
- > New insulated roof, warm in winter and cool in the summer
- > 12 volt socket for charging phone etc. (Same sort of socket you would find in your car)
- > Toilets, hot showers and hot water for washing up at sinks are available on site

Prices

Seven night stay – Monday pm to Monday am or Friday pm to Friday am £500

Weekend – Friday pm to Sunday pm £235

Long weekend – Friday pm to Monday am £265

Mid-week – four night break Monday pm to Friday am £285

Mid-week – two night break Monday pm to Wednesday am or Wednesday pm to Friday am £200

Mid-week – three night break Monday pm to Thursday am or Tuesday pm to Friday am £265

One night £150 (Single nights are only available on the day and are not bookable in advance)

£50 deposit required at time of booking with the balance payable 1 month before your stay.



Our Accommodation - Hopper Hut Phoenix

New for this year our Hopper Hut accommodation, these have all the luxuries of our other structures like a double bed, wood stove, 3 ring gas stove and all the other things to make coming away an easy experience so you only need to bring what you want to wear and eat. The Hopper Huts are the ideal accommodation if your looking to come away with friends or just want to get away for a peaceful weekend. With the new insulated roof and wood stoves you will be warm and toasty in the winter and cool through the summer.

You will of course be able to have a camp fire and enjoy the amazing view towards Tenterden.

Key Points

- > Sleeps four comfortably
- > Wood stove
- > Cook on a camp fire or gas hob in the Hut (all gas for the cooker is provided)
- > Pizza Stone available for use on the campfire so you can make your own pizzas!
- > Double bed with linen, duvet etc.
- > Cool box provided size 30li (Freezer packs are provided which we will replenish daily)
- > Futon (You will need to bring sleeping bags or duvets for this, pillows and sheets are provided)
- > Solar powered lighting
- > New insulated roof, warm in winter and cool in the summer
- > 12 volt socket for charging phone etc. (Same sort of socket you would find in your car)
- > Toilets, hot showers and hot water for washing up at sinks are available on site

Prices

Seven night stay – Monday pm to Monday am or Friday pm to Friday am £500

Weekend – Friday pm to Sunday pm £235

Long weekend – Friday pm to Monday am £265

Mid-week – four night break Monday pm to Friday am £285

Mid-week – two night break Monday pm to Wednesday am or Wednesday pm to Friday am £200

Mid-week – three night break Monday pm to Thursday am or Tuesday pm to Friday am £265

One night £150 (Single nights are only available on the day and are not bookable in advance)

£50 deposit required at time of booking with the balance payable 1 month before your stay.



Our Accommodation - Bell Tent

Our 5m Bell Tent is set in a position with great views across the valley. The tent comes equipped with all cooking equipment plus cups, plates, cutlery etc. You will be able to have your own camp fire to sit round and cook on with good views towards Tenterden.

Key Points

- > Sleeps 4 comfortably
- > Toilets, hot showers and hot water for washing up at sinks are available on site
- > Covered outside cooking area with table and chairs
- > Cook on a camp fire or camping gas cooker (all gas for the cooker is provided)
- > Pizza Stone available for use on the campfire so you can make your own pizzas!
- > Double blow up beds and single blow up beds (Please bring your own sleeping bags and pillows for these)
- > Cool box provided size 30li (Freezer packs are provided which we will replenish daily)
- > Fairy lights

Prices

Seven night stay – Monday pm to Monday am or Friday pm to Friday am £500

Weekend – Friday pm to Sunday pm £200

Long weekend – Friday pm to Monday am £250

Mid-week – four night break Monday pm to Friday am £250

Mid-week – two night break Monday pm to Wednesday am or Wednesday pm to Friday am £175

Mid-week – three night break Monday pm to Thursday am or Tuesday pm to Friday am £200

One night £150 (Single nights are only available on the day and are not bookable in advance)



Our Accommodation - Summer Camping

Our 28 day summer camping will be open again from the end of July for all you tent enthusiasts. Set in a valley with woodland either side you will be able to camp in a large field with plenty of room for children to run around.

You will be able to chill out round a campfire or follow a public footpath to Rolvenden for its well stocked local shop and pubs.

Hot showers and toilets are available on site along with mains water. You will also be able to drive onto the field and park right next to where you want to pitch and should the weather make driving on the field not possible there is plenty of parking not to far from where you can pitch.

You will also be able to hire a fire pit off us for £5 or you can always bring your own. We will be selling firewood at £5 a crate or again you are welcome to bring your own firewood. We will be selling kindling or you can bring your own kindling or fire lighters.

Prices

Adults per night – £9

Child per night – £4

Tent one off charge – £5

Car no charge but limited to one per pitch unless otherwise agreed. (Extra cars charged at £5)

£10 deposit required at time of booking with the balance payable 1 month before your stay.

Full amount is payable if booked with less than a month before your stay.

Sorry no dogs this year but we hope to be able to take them in 2015.



What Our Guests Have To Say...

“We’ve had an amazing time”

Thanks so much for a wonderful 2 days. We’ve had an amazing time in our first experience in a Yurt, coupled with glorious weather! The children loved their “mini” Yurt experience to! Jon & Sara were great, very attentive to our needs and friendly. Would come back again – it has everything we need here! Thanks again.

Steve, Becki, Amelia & Katya. (London)

“It’s Spike again”

It’s Spike again and we have obviously come back to Little Halden Farm for a glamping holiday, but this time we came for my brothers birthday because he loved it so much.

My brother and I have had yet another brilliant stay st the farm. The open land is awesome to play in.

Yet again Jon and his family gave us a lovely stay and I’m positive that we will come again.

Spike, Bruno, Tess & Tim. 29th March 2014 (Middlesex)



Frequently Asked Questions

The questions are in no particular order and have all been asked by previous guests so please scroll down and hopefully you will find the information you are looking for. Please bear in mind a lot of the questions will relate to staying at the glampsite.

What facilities are available at the summer campsite?

We supply toilets, showers, refuse bins and mains water for drinking, you will need to bring whatever else you need when you pitch your own tent.

Do we need to bring linen for the glampsite structures?

The double bed in each structure has all the linen provided. All other types of beds ie. bunk beds, sofa beds we provide the bottom sheet plus pillows and cases but you will need to bring either duvets or sleeping bags. We do provide extra blankets.

Do we need to bring towels?

Yes you will need to bring towels but we do supply tea towels for drying up.

When we stay at the glampsite do we need to bring plates, cups, cooking equipment etc.?

No, we supply all your crockery etc. and cooking equipment.

Do we need to bring wellingtons?

You will be staying in a field so if it rains the grass will be wet! They are also a good idea even in the summer, morning dew can also make the grass very wet first thing.

What clothes to bring?

What ever is suitable for the time of year.

Can we BBQ?

Yes, every structure has a grid to go over your fire pit and we supply you with tongs, fork etc. You will need to bring your own charcoal if you don't want to cook on the embers from your campfire.

Is there a pizza stone?

Yes, if you want to cook pizzas on the campfire we can supply a pizza stone. A £10 deposit is required in case of accidental breakage.

How many cars can we come in?

We allow a maximum of 2 cars per structure at the glampsite and for the summer camping it is 2 cars per pitch, you must talk to us first if you want to come in more cars than this as our parking is limited.

Can we bring our own wood?

Yes you can bring your own wood for the campfires so long as it makes no unpleasant smoke. All wood for the stoves is supplied by us as this must be well seasoned to prevent damage to the stoves and flues.

How much do you charge for wood?

A crate of either logs or campfire wood is £5. If you are staying at the glampsite you will receive when you arrive a free basket of logs and a free crate of campfire wood plus kindling. You are welcome to bring your own kindling or fire lighters or you can purchase kindling from us.

Are there outside seating and tables?

Yes we supply outside furniture for each structure at the glampsite.

Can we squeeze more people into any of the structures?

Simple answer is no, we don't mind a travel cot but we won't allow more than the maximum number of guests stated for each structure. Packing you in like sardines is hardly a glamping experience! If you book a main structure we will allow a tent to be pitched to the side for a couple more people but there will be a charge for this and you will have to bring all your own plates, beds etc.



Campsite Code

Please understand the code listed below is in place so that you can be sure that we take the enjoyment and safety of your stay seriously. We hope you agree that the code is more common sense and is there to protect the quality of your stay.

Arrival and departure: You can arrive from 2pm on the day of your stay, but please be on site before 6pm as it is not very easy showing you where you will be staying and answering questions in fading light. Departure is, on a weekend break by 7pm Sunday and for weeks and mid weeks 10am. We can be flexible on arrival or departure but please speak to us first ie. returning guests will know their way around.

Cars: Please take care when driving on the site and when arriving and departing via the country lane. Only two cars are allowed per pitch unless agreed prior to your stay, the campsite car park is reserved for our guests only.

Campfires & wood stoves: Campfires are only to be lit in the fire pit already in place at the glampsite and must not exceed the original pit size. At the general campsite all campfires must be in a raised fire pit off the ground, you can hire a fire pit from us or you are welcome to bring your own fire pit as long as they are in good condition and of a modest size. The emphasis is on campfire not bonfire! At the glampsite a complimentary crate of wood each is provided for the campfire and wood stove thereafter wood for the stoves or campfires can be purchased at £5 per crate, you can burn paper or card on the campfire or stove but plastics or any material that can cause unpleasant smoke must

not be burnt. All fuel for the woodstoves will be provided by us to ensure only seasoned wood is burnt on the stove. You are welcome to bring wood for the camp fires if you would like, whatever you wood you bring to burn must not cause unpleasant smoke. No wood is to be taken from the wood as this will effect the ecology of the woodland and lead to a very sterile environment.

Axes & Saws: These are not allowed on either site for reasons of safety regarding yourself and other guests, our insurance does not cover us for the use of any axe or saw.

12 Volt Socket: These sockets are only provided at the glampsite and are similar to what you would find in a car and has a inline 2 amp fuse. This is suitable to charge phones and other 12 volt devices but all devices connected are done so at your own risk.

Noise: No excessively loud or amplified music. Noise should be kept to a minimum after 10:30 at night. Any other anti social behavior that may intrude on the enjoyment of other guests staying on the sites or have an adverse effect on the surrounding environment is not allowed.

Damage: Any damage to any of the structures, fittings and contents must be paid for.

Rubbish: Please put all your rubbish in the bins provided in the car park area. Please be careful not to allow any littering of the campsite including cigarette butts.

Smoking: Is not allowed in or on any of the structures at the glampsite. If you do smoke wherever you are on the farm please dispose of your butts safely and do not leave them on the ground, we class this as litter.

Pets: Sorry no pets.

Fireworks and lanterns: These are not allowed.

Water: All water available is mains water and fit for drinking. Excessive water use ie. car washing, hose pipes are not allowed. All our water is metered!

Showers and sinks: Please supervise all children when using the hot water in the showers or sink, they are capable of producing very hot water.



How To Find Us

How to find the Glamp Site

Directions to the glamp site are quite easy, you can use the postcode TN17 4JG which will get you to the entrance gate, we strongly advise you access Halden Lane from the A28 as some sat navs have led some of our guests on quite a tour of the surrounding lanes.

A good idea is to head for Tenterden or Rolvenden first before trusting your sat nav to take you to the glamp site

Come through Tenterden on the A28 carry onto Rolvenden for 2 miles (please ignore the sign for our main farm entrance off the A28), just before Rolvenden after a row of houses turn right down Halden Lane, drive for half a mile until you come to a sharp left hand bend. Directly in front of you, you will see two metal gates just go through the one with our sign on.

If you are coming from the opposite direction just as you leave Rolvenden on the A28 to Tenterden you will come round a sharp right hand bend, Halden Lane will appear on your left before a row of houses.

How to find our Summer General Campsite

Directions to the summer general campsite are very easy, if you have a sat nav please use the postcode TN17 4JL, for the general campsite you will be using the main farm entrance which is located off the A28.

Come through Tenterden on the A28 carry onwards Rolvenden for 1.5 miles, at the top of Rolvenden hill look to the right and you will see the sign for our farm.

If you are coming from the opposite direction come through Rolvenden on the A28 to Tenterden for about a mile, you will come round a sharp left hand bend, 200 yards after this look out for the sign for our farm on the left.

Once on our lane please drive slowly and continue straight down for about a quarter of a mile until you see the campsite sign on your right at the bottom of a steep hill.



Booking Enquiries

Please get in touch if you need help or more information, you can use the contact form on our website. Alternatively give us a call on the number below. We will aim to get back to you at the earliest opportunity.

Tel: 07854 523966

Email: support@littlehaldenfarm.co.uk




Little Halden Farm